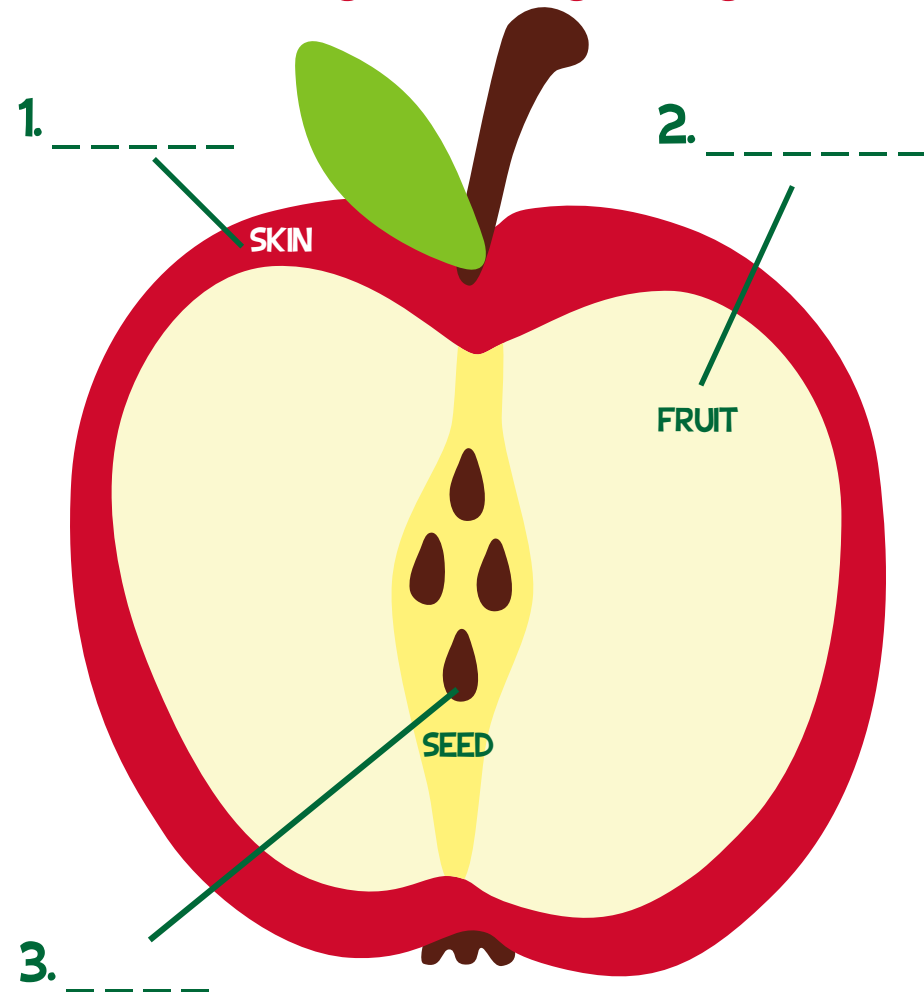




Imagine the apple below is the Earth.
Can you identify the layers?



ACTIVITY:

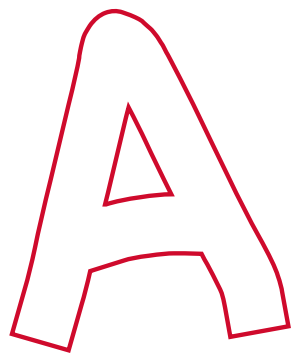
Learn more about our planet by slicing an apple using the directions below. Make sure an adult helps you cut the apple!

1. Cut the apple into four equal parts. Three parts represent the oceans of the world. The fourth part represents the land area.

2. Cut the land section in half lengthwise. Now you have two $\frac{1}{8}$ th pieces. One section represents land such as deserts, swamps, arctic, and mountain regions. The other $\frac{1}{8}$ th section represents land where man can live and may be able to grow food.

3. Slice the $\frac{1}{8}$ th section of 'land' crosswise into four equal parts. Three of these $\frac{1}{32}$ nd sections represent the areas of the world which are too rocky, too wet, too hot, or where soils are too poor for farming, as well as areas developed by man.

4. Carefully peel the last $\frac{1}{32}$ nd section. This small bit of peeling represents the soil and land on earth we use for growing food.



IS FOR APPLE

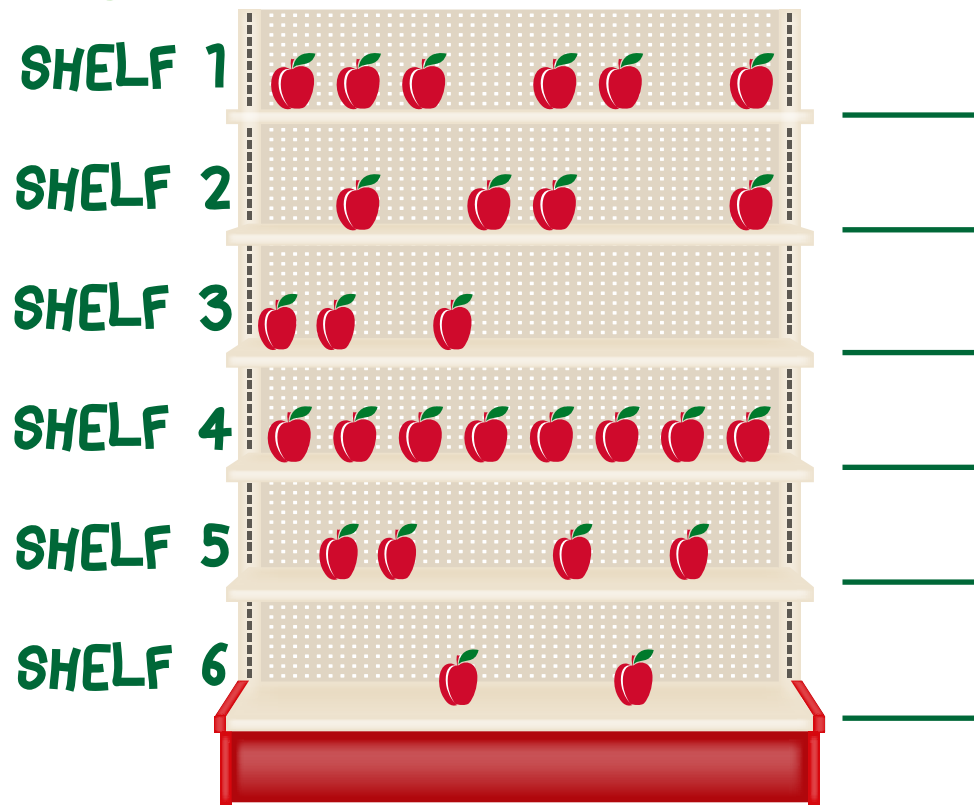
Why do you like apples? _____

Color in the letter A your favorite apple color (red, green, or yellow).



APPLE MATH

How many apples are on each shelf at the market?



TOTAL APPLES: _____

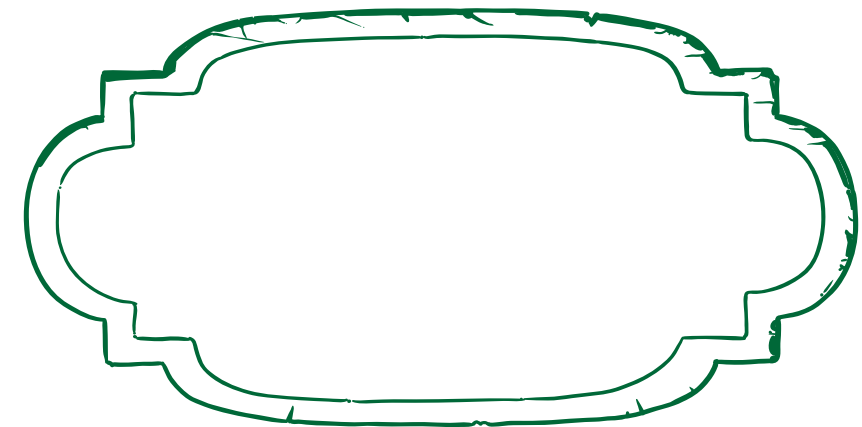
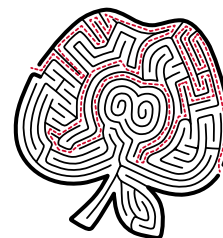
- How many apples are on each shelf?
- Place an X beside the shelf with the most apples.
- Circle the shelves that have four or less apples.
- What is the sum of the apples on the shelves?

*Advanced Apple Math:

- How many apples would be on each shelf if each fruit represented 5 apples? _____
- What if each fruit represented 10 apples? How many total apples would there be? _____

ANSWER BANK

If I WERE AN APPLE TREE...
1) spring, nectar, pollen, 2) summer, sun
3) fall
4) winter



MY VISIT TO THE FARM...



In the space below, draw a picture of an item or scene you saw on the farm:



What is one fact you learned? Be sure to write your answer in complete sentence(s) below:



FUJI FUN WORD SEARCH

Below are some words that describe apples grown in Georgia. Find them each and consider yourself an apple expert!



WORD BANK

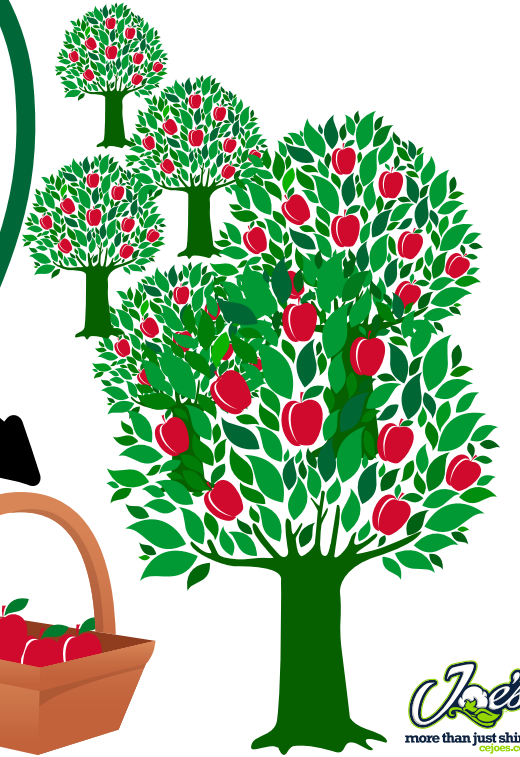
APPLES	CARAMEL	FARMER	FUN	SEED	GROWER
BITE	CRUNCHY	CORE	HEALTHY	SWEET	JUICY
CRISP	DELICIOUS	STEM	GEORGIA	SOUR	NUTRITIOUS

I N L G N C C S G T U N L M W J R
 B C B C G E O R G I A Q I C S K A
 D R I I W E F L U H G N D U S I E
 E I F Z T H D F U N G R O W E R H
 R S U S E E D E L I C I O U S P I
 A P P L E S H E A L T H Y D W C Y
 S Z H L W W S K E I E E Y E E R K
 F T C B S T E M R D P K L A E E D
 T S O P T O A T C A X N A C T R T
 F A R M E R U I F F V Z R Z C M R
 B V E I A N D R T T R N P V E T L
 J U I C Y N R T C E S M E V N H T



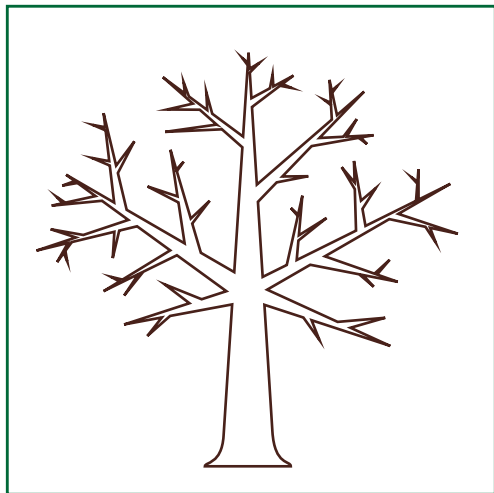
A-MAZE-ING APPLES

Help Farmer Beth find her way to the apple orchard so she can fill up her basket with delicious red apples!

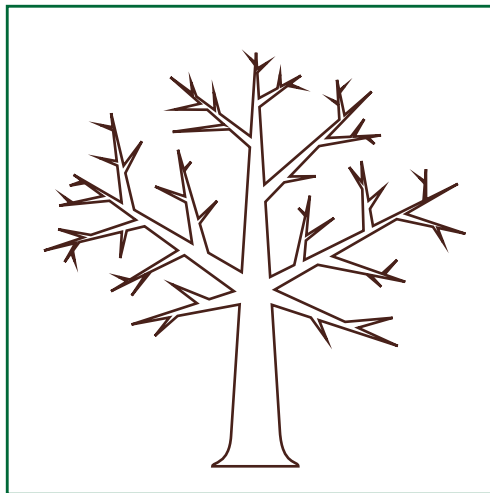


IF I WERE AN APPLE TREE, WHAT WOULD I LOOK LIKE EACH SEASON?

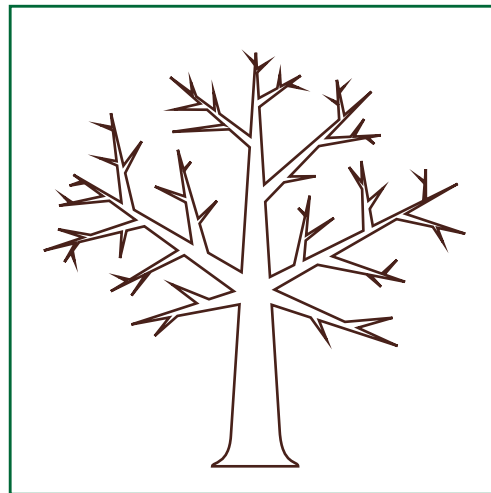
Directions: Below are four unfinished pictures of an apple tree. Finish the apple tree based off of the seasons. Label each season by filling in the box descriptions below.



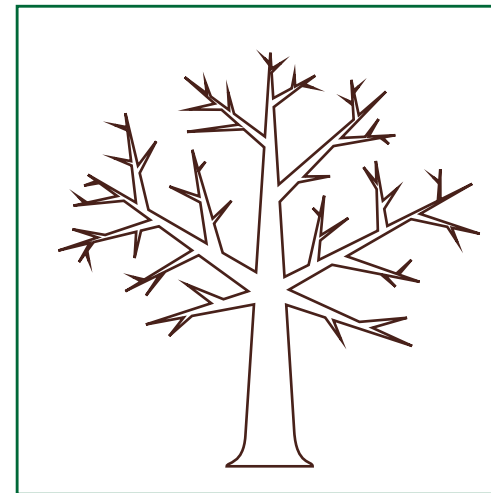
1. In _____ I have pretty pink and white flowers on me. Honeybees visit often for _____ and _____. Then apples start to grow on my branches.



2. In _____ I am growing green and red. My leaves reach to the _____ for warmth and food. Apples are everywhere.



3. In the _____ my apples are picked for others to enjoy and eat!



4. My leaves shed by _____ and I enjoy a few cold months before my flowers return.

WORD BANK: WINTER SPRING FALL SUMMER NECTAR SUN POLLEN

ANSWER BANK

Total apples: 270
 Shelf 4 = 80 Shelf 5 = 40 Shelf 6 = 20
 f) Shelf 1 = 60 Shelf 2 = 40 Shelf 3 = 30
 Shelf 4 = 40 Shelf 5 = 20 Shelf 6 = 10
 e) Shelf 1 = 30 Shelf 2 = 20 Shelf 3 = 15
 Advanced Apple Math
 a) 6, 4, 3, 8, 4, 2 b) Shelf 4
 c) Shelves 2, 3, 5, 6 d) 27
 LAYERS OF EARTH
 1 crust 2 mantle 3. core

